



IWRB Managed Recharge Program

Environmental Resources Technical Working Group

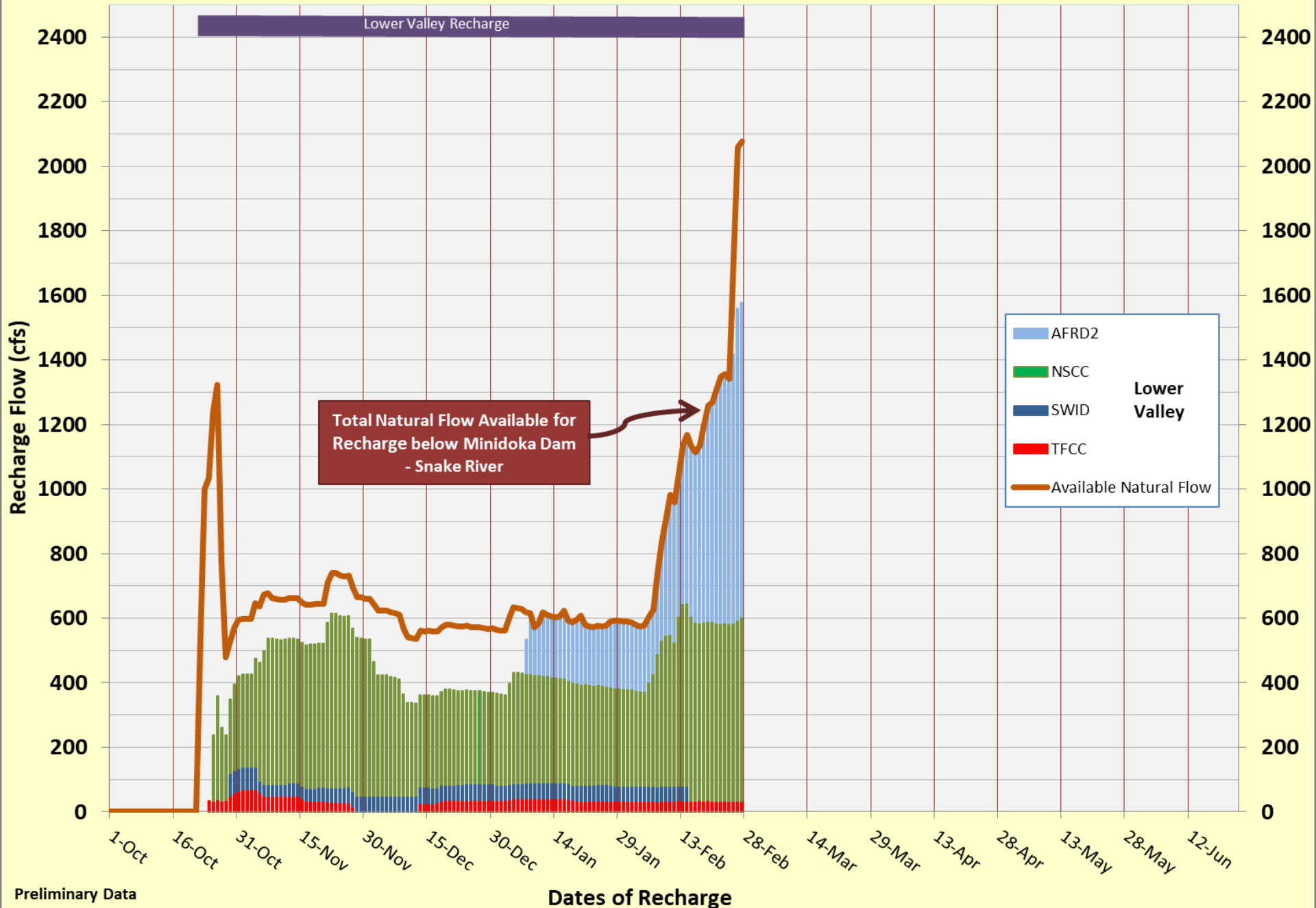
Wesley Hipke

IWRB Recharge Program Manager

February 28, 2020

Natural Flow - IWRB Recharge Rates - 2019/2020 Season

Total Volume of Recharge = **149,901** af (October 23, 2019 to February 27, 2020)



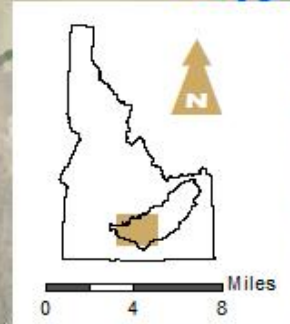
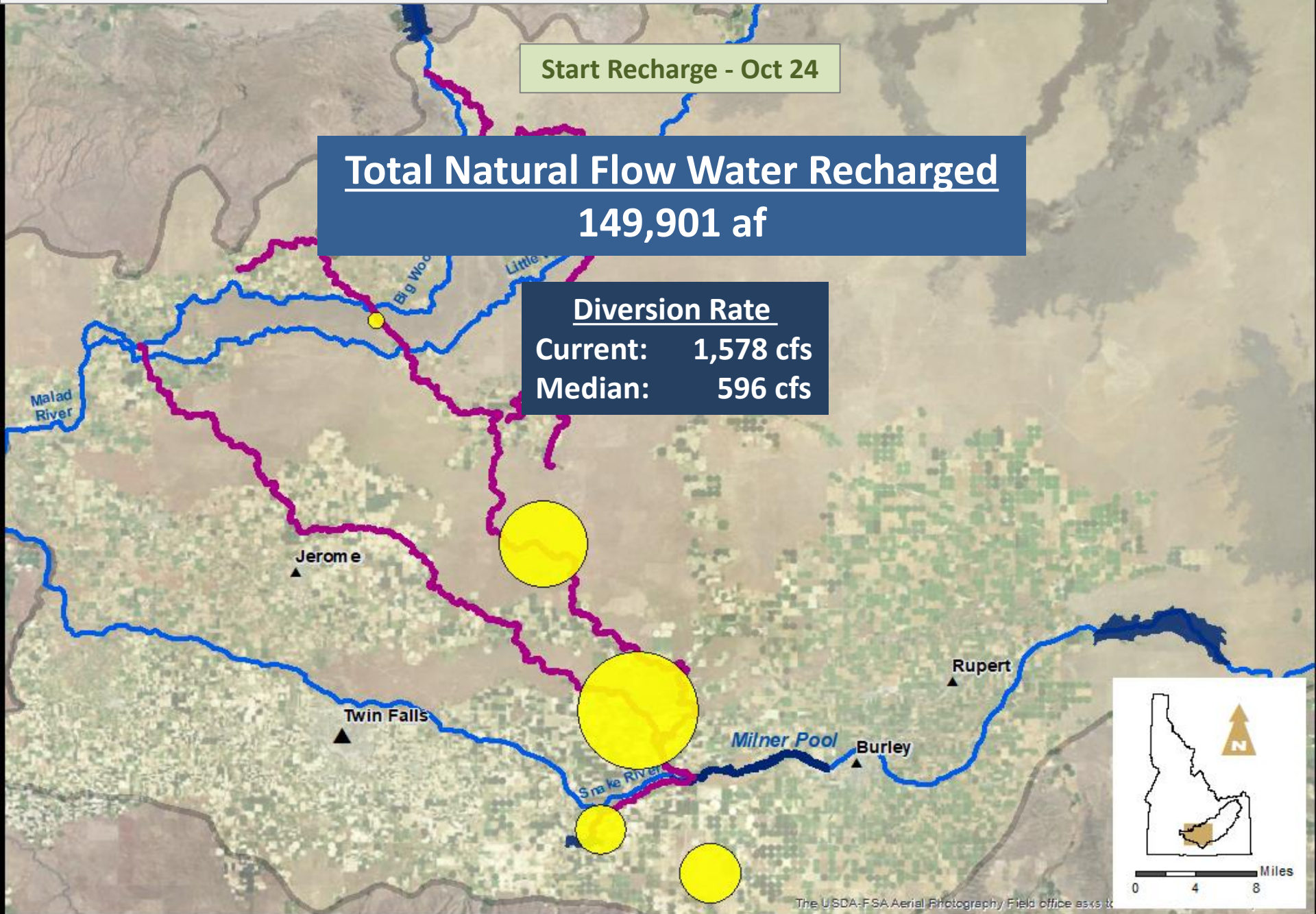
Preliminary Data

IWRB Natural Flow Managed Recharge – 2019/2020

Start Recharge - Oct 24

Total Natural Flow Water Recharged
149,901 af

Diversion Rate
Current: 1,578 cfs
Median: 596 cfs



IWRB Recharge – Winter 2020

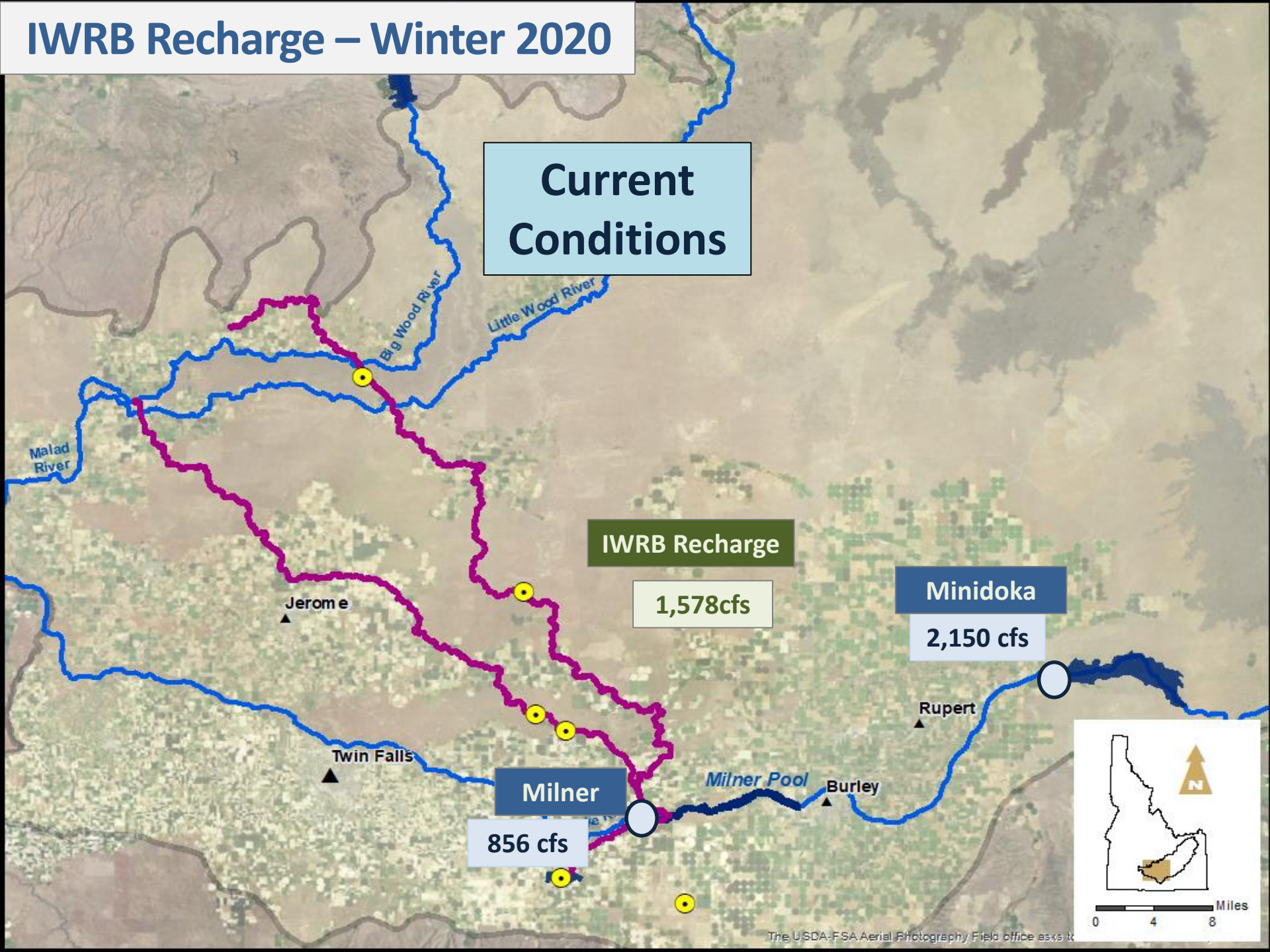
Current Conditions

IWRB Recharge

Minidoka
2,150 cfs

Milner
856 cfs

1,578 cfs



IWRB Recharge Capacity – 2019/2020

Potential Spring Capacity
~1,600 cfs



DA-FSA Aerial Photography Field office asxs.t

IWRB Upper Valley Recharge Capacity

Current Canal Capacity
2,400 cfs

IWRB Canal Capacity
450 cfs

Winter to Mid-April

Henry's Fork
600 cfs

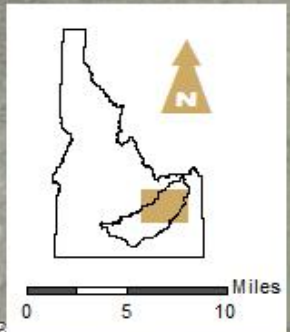
South Fork
980 cfs

Middle Snake
870 cfs

LEGEND

Recharge Sites

-  IWRB
-  Private
-  Canals



Miles
0 5 10

The USDA-FSA Aerial Photography / Field office asks to



IWRB Upper Valley Recharge Capacity

Current Site Capacity
~300 cfs

IWRB Site Capacity
140 cfs

After Mid-April

IWRB Off-Canal
Capacity Goal
200-500 cfs

Henry's Fork

100 cfs

South Fork

25 cfs

Middle Snake

175 cfs

LEGEND

Recharge Sites

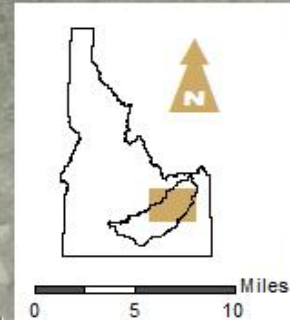


IWRB

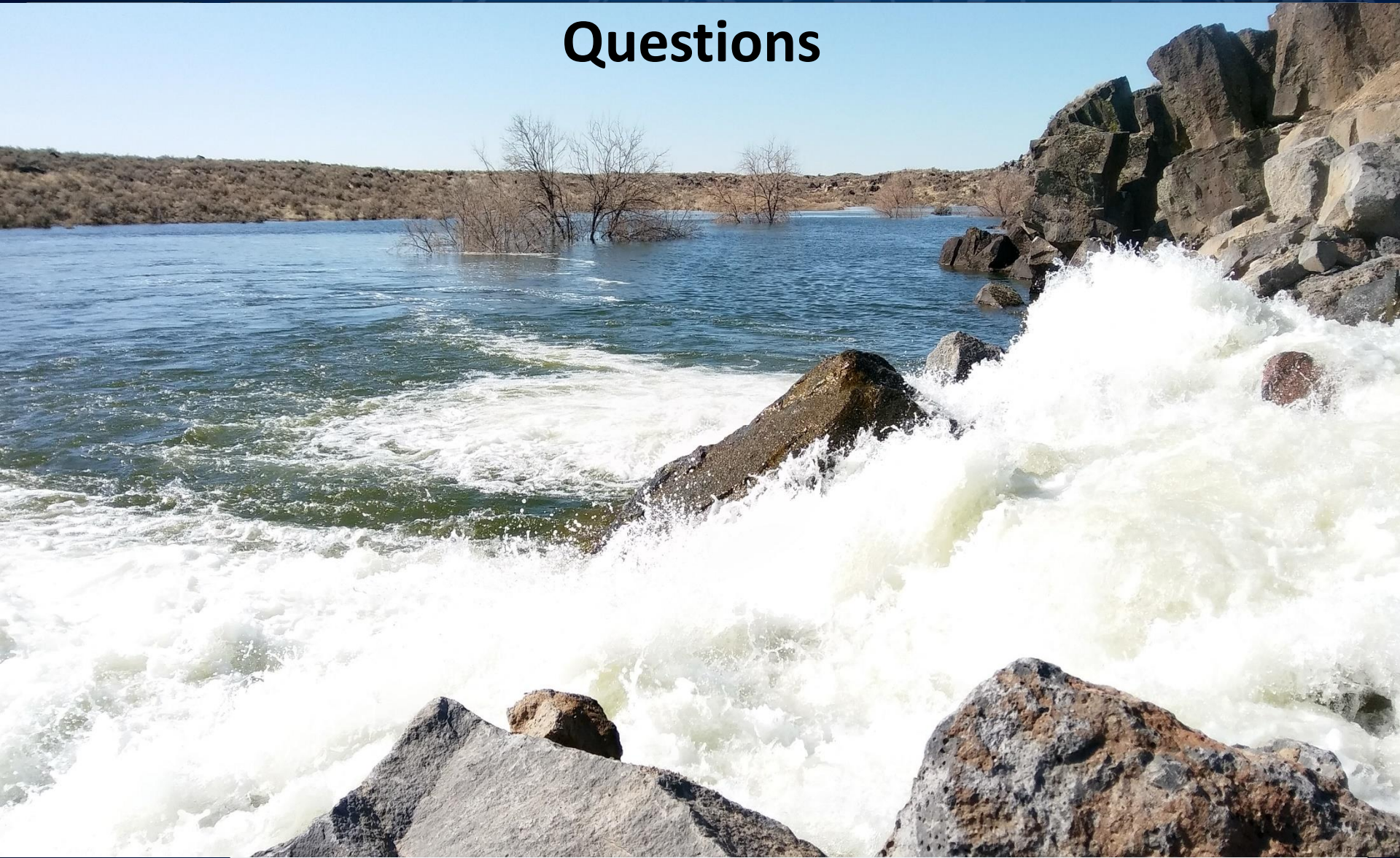


Private

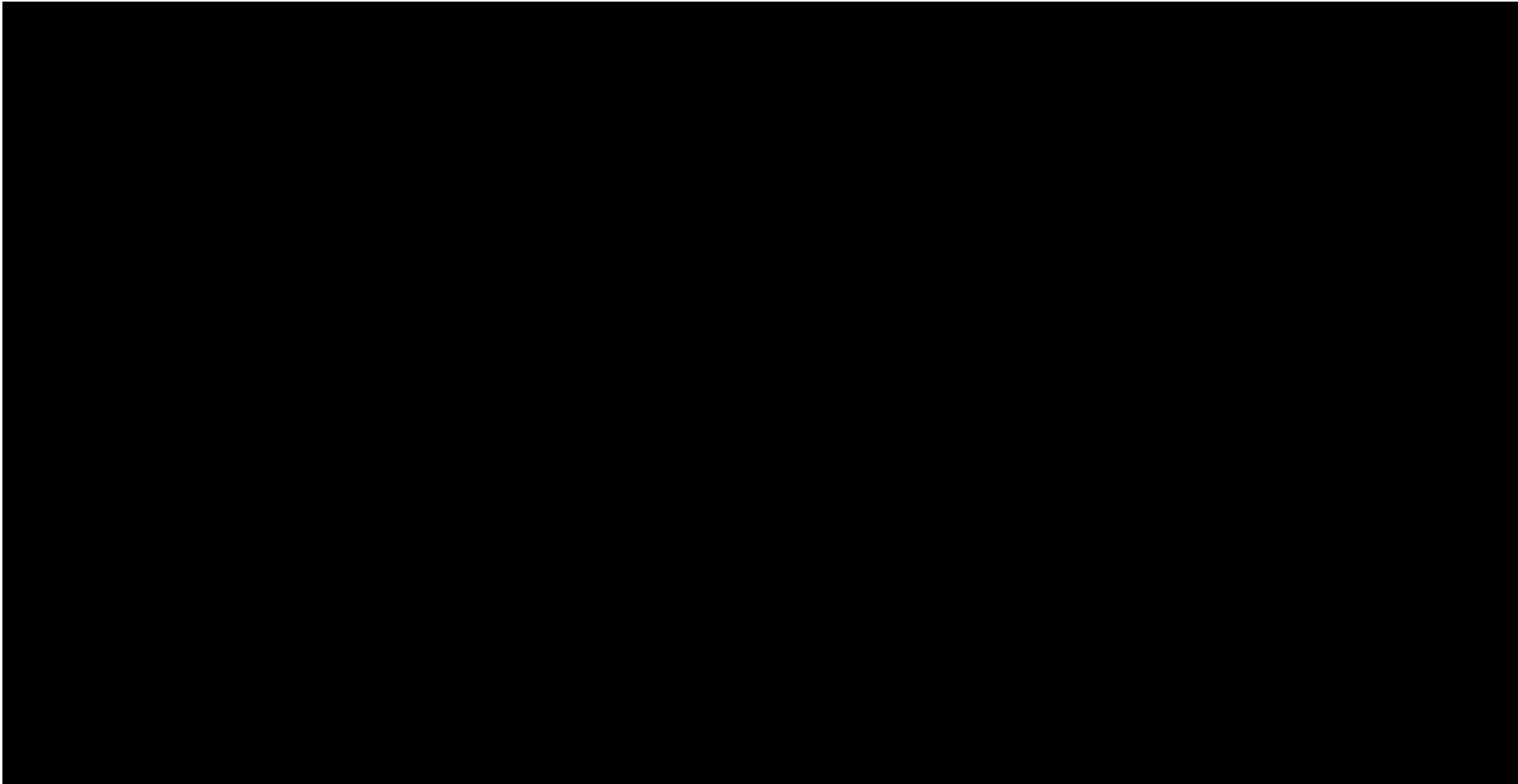
Canals



Questions



ESPA Aquifer Response 2016-2019



IWRB Managed Recharge Impacts 2014-2019

